

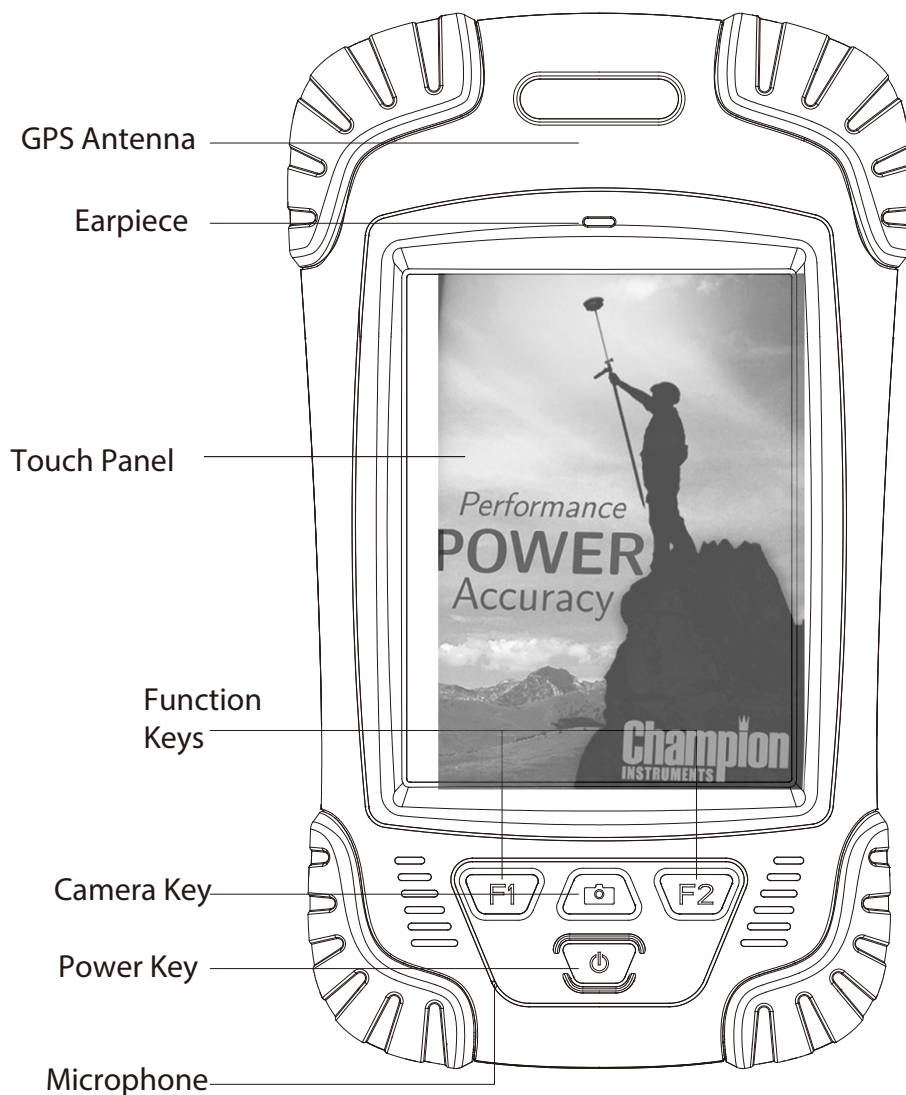
Scepter IIITM

Data Collector

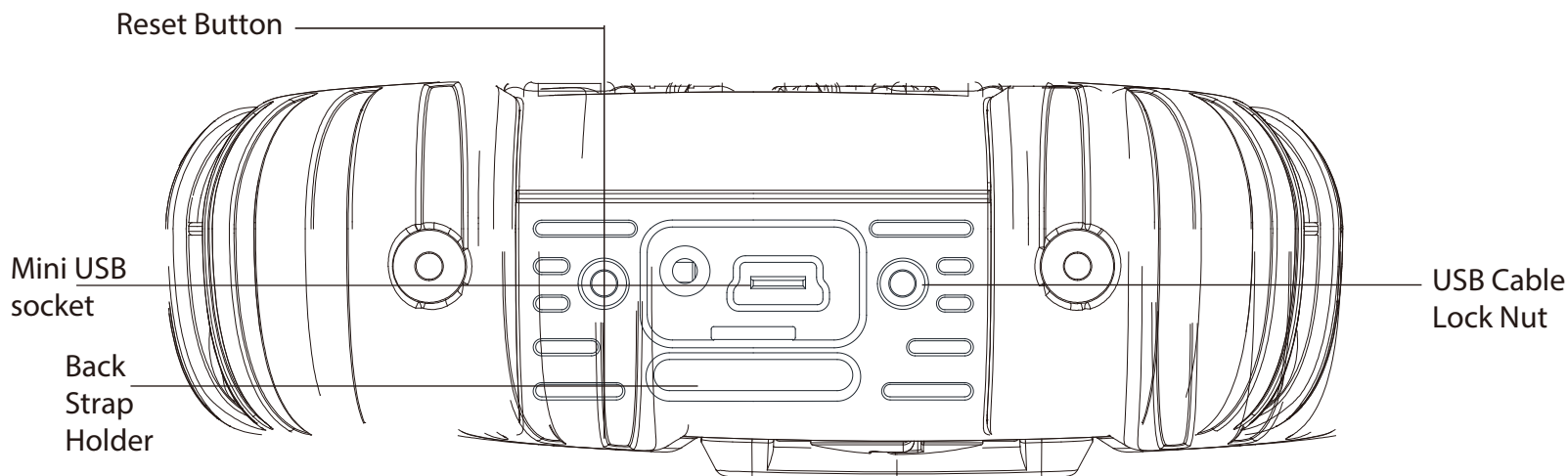


Getting Started Guide

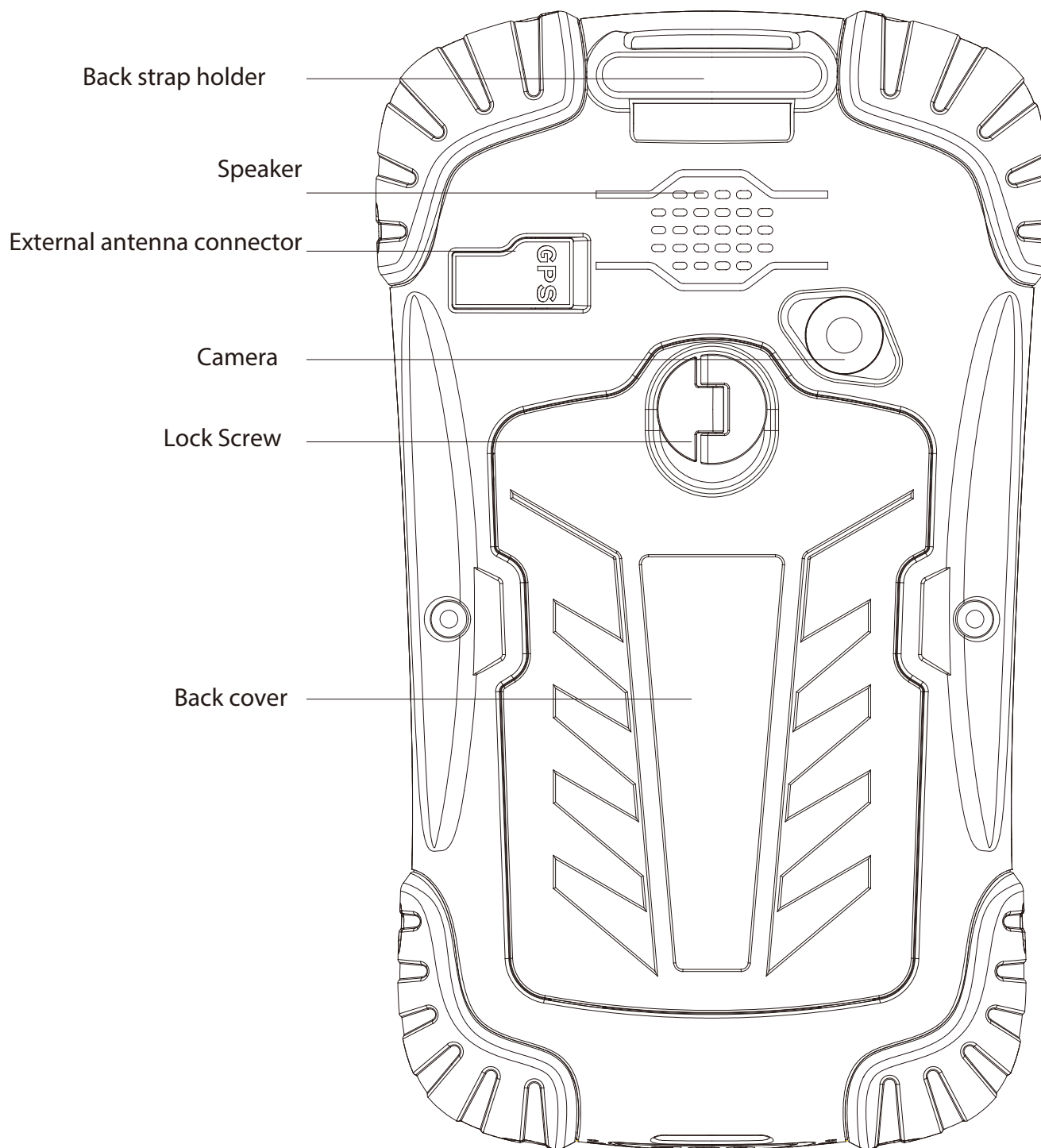
1. Physical Appearance



Front



Bottom



Back

2. Operating instructions

- I. How to Charge the Scepter III
- II. Inserting the TF (micro SD) card/SIM card/Battery
- III. Turning the Scepter III on and off
- IV. Connecting to PC to install an application or data
- V. Collecting GIS data with internal GPS and GIS applications

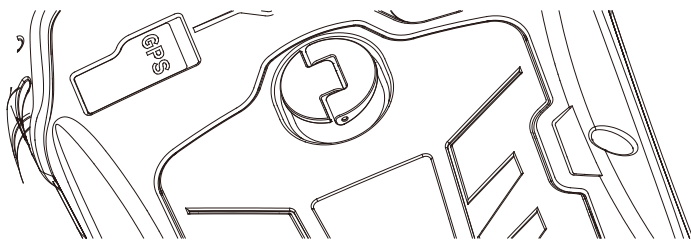
I. How to Charge the Scepter III

Insert the Li-ion battery into the battery compartment to charge. Note that the mini USB cable can also be used to charge the receiver. During charging, if the receiver is on, there is a charging icon in the top right corner of the screen.

II. Inserting the TF (microSD) card/SIM card/Battery

1. Turn the back cover screw to the open position according to the instructions on the back cover and take off the back cover (Figure 1)
2. Insert the SIM card and TF card according to the instructions on the battery compartment (Figure 2)
3. Insert the battery
4. Open the back cover and turn the screw to the lock position according to the instructions on the back cover (Figure 1)

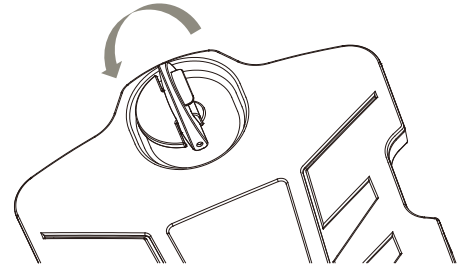
instructions on the back cover



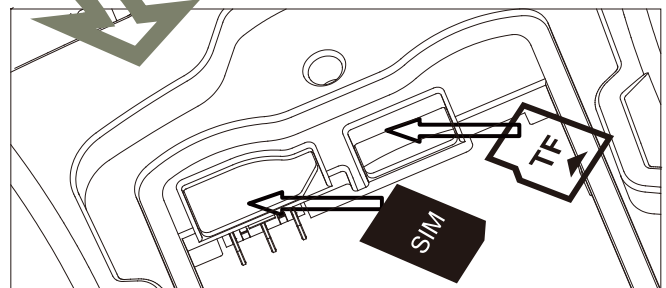
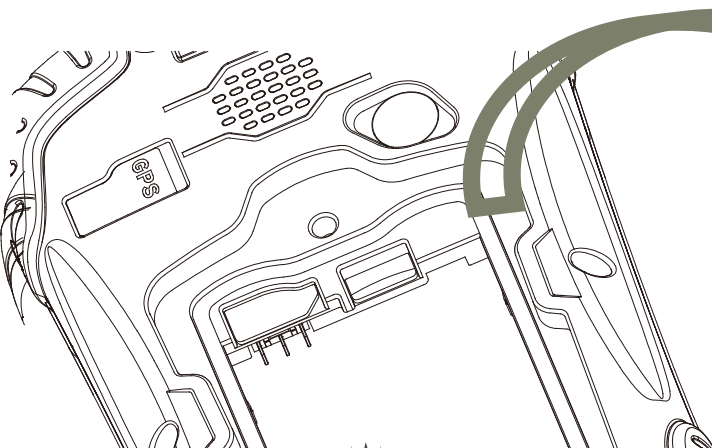
Turning Lock



Counter clockwise rotation



(Figure 1)




(Figure 2)

III. Turning the Scepter III on and off

Make sure the battery has enough power; connect the receiver to your PC with a mini USB cable (battery inserted) Press Power button for 3~4 seconds to turn on (until the boot screen appears)/turn off. Please note that if the receiver is down, press the reset button in the bottom of the receiver to reset.

IV. Connecting to PC [to install an application or data]

1. Make sure Microsoft ActiveSync application has been installed (if PC OS is Win-XP). If PC OS is Vista/Win7/Win8, make sure Windows Mobile Device Center has been installed.
2. Connect the receiver to your PC with mini USB cable.
3. ActiveSync application connects the receiver and your PC automatically. The  icon appears in the toolbar of the PC and 'Synchronization Set-up Wizard' appears meantime, click 'Cancel'
4. Click "Browse" to check the files in the receiver, then transfer data between your PC and receiver using Windows cut, copy, and paste functions.

Installing Applications

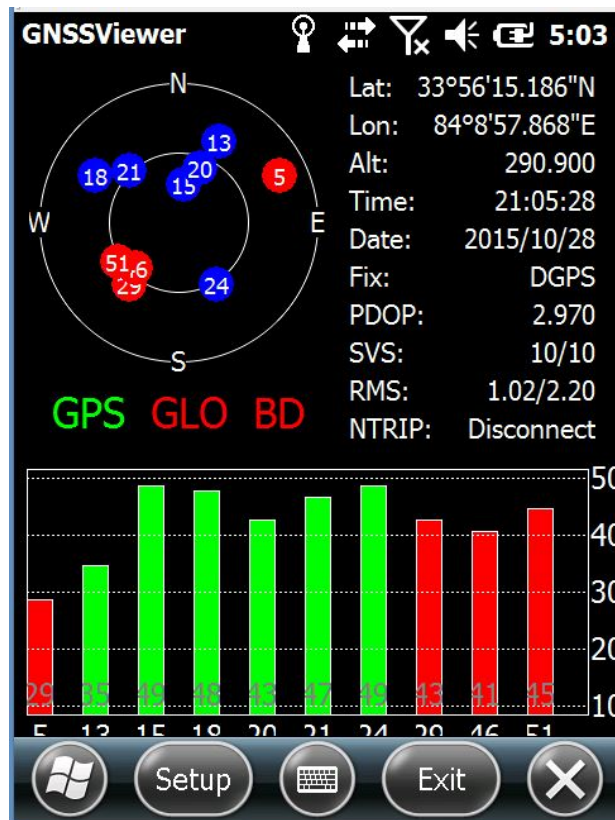
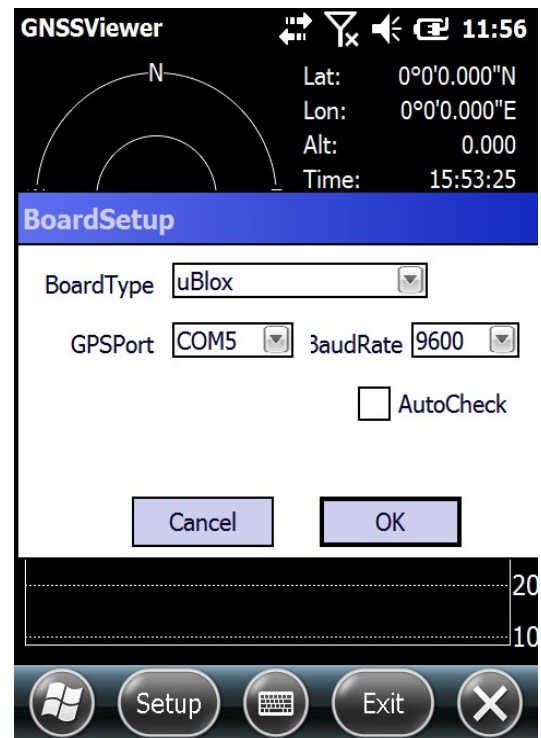
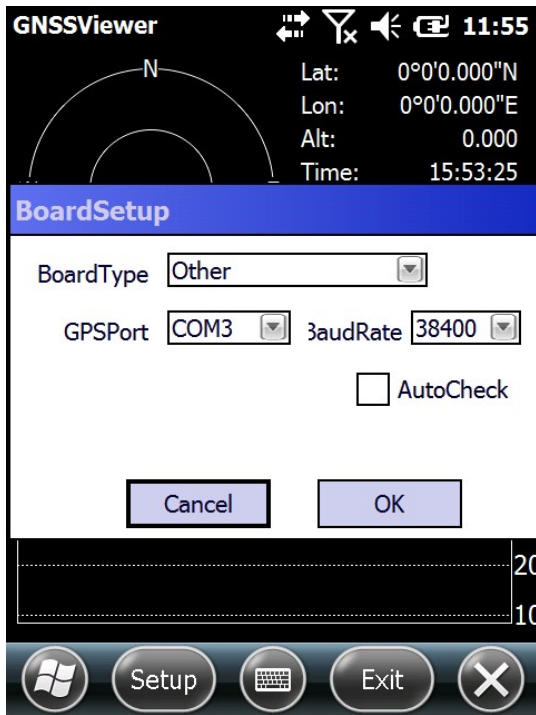
1. Make sure the Scepter III is connected with your PC via ActiveSync
2. Click "Install file" on your PC to start the installation. If the install file is compatible for mobile devices, copy the file into the Scepter III and click to start the installation
3. Select the installation directory in Scepter III ('Flash Storage' is suggested), click 'Install'. Please note that it is suggested to install the application in 'Flash Storage', and save your data in the TF card

V. Collecting GIS data with internal GPS and GIS applications

Using the GPS

The GPS's physical port number is COM3, Baud Rate is 9600, and its virtual port number is COM5

1. Start -> File Explorer -> My Device -> GNSSViewer folder -> GNSSViewer
2. BoardSetup:
BoardType: Select other or uBlox if module is uBlox GPSPort: COM3 or COM5 BaudRate: 9600
3. Press OK, wait for the connection to see GPS positioning



-Using the Camera

1. Select 'Start->Picture & Video', select 'Camera' or camera icon to take photos. Click screen and select 'OK' to exit
2. Press the camera key to take a photo. Click screen and select 'OK' to exit

Using a Wireless Connection (Bluetooth/GPRS/Wi-Fi) Bluetooth

1. Select 'Start→ Settings→ Connections→ Wireless management', click the right of Bluetooth to activate the Bluetooth device.
2. Select 'Start→Settings→Bluetooth', click 'Add new device...', system will search available Bluetooth devices. Select the device in refurbished list and click 'Next' in the bottom right corner, then input password
3. Select 'Next', input password in external Bluetooth device and finish the connection. Please note the password is used to the connection between Bluetooth devices and can be setup freely, e. '1234'

GPRS Connection Settings

1. Make sure there's a SIM card in the receiver
2. Select 'Start→ Settings→ Connections→ Connections '
3. Click 'Add a new modem connection'
4. Input connection name, select 'Cellular Line (GPRS)', click 'Next'
5. Input broadband (for AT&T) as the APN ,then click 'Next'
6. Click 'Finish' and add new connection successfully
7. Click 'Manage existing connections'
8. Hold down on the new connection button and select 'Connect'
9. If there is a GPRS identifier on the signal icon on the top right corner, it indicates a successful

Connection to Wi-Fi

1. Select 'Start→ Settings→ Connections→ Connections→ Wi-Fi
2. Click 'Search for Networks,' select a network that listed. Follow the installation guide to input password and finish the connection.

3. Useful Settings

Screen response

Select 'Start→ Settings→ System→ Screen', click 'Align Screen' icon and follow the guide to align the screen

Adjust backlight

Select 'Start→ Settings→ System→ Backlight', adjust backlight status according to the guild

Auto power off

Select 'Start→Settings→System→Power→Advanced', set the power off time conditionally

Remove programs

Select 'Start→Settings→System→Remove Programs', select the program in the list and click 'OK' to remove

Restore Factory Defaults

Select 'Start→Settings→System→Clean Boot, restore factory defaults settings according to the guide Caution: All the data and programs will be lost, If restore factory defaults setting

4. Environmental Specifications

- Operating temperature: -10+60 °C
- Storage temperature: -30 °C ~ +70 °C
- Drop: 1.2m drop onto all faces
- Casing: Dustproof and resistant to heavy wind-driven rain per IP65 standard
- Humidity: 5% ~ 95% (non-condensing)
- Clean the display with a soft cloth, and be careful not to wipe the display with abrasive chemicals of any kind. Do not expose your device to extreme heat (60 °C) or cold (-10 °C) For example, do not leave it in the trunk of your car exposed to high heat.
- Do not attempt to open the device other than as instructed in this manual
- Rough handling can break internal circuit structure
- Do not use harsh chemicals, cleaning solvents, or strong detergents to clean the device.
- Use only the recommended accessories.
- Do not excessive sound pressure from earphones and headphones. Note that this can cause hearing loss.

USB Data Cables

- Insert the USB data cable connector into the USB interface of the Scepter III
- Connect the other terminal of the USB data cable with the USB interface of your PC
- This version supports a USB interface. You can connect your Scepter III with your PC via the USB & Data cable. You can also copy or move the files to and from your Scepter III and PC, browse the images, or record files and video files saved in the Scepter III, accessed on your PC

5. General Specifications

Physical	Size: 158mm x 85mm x 25mm
	Weight: 290g (without battery)
	350g (with battery)
Battery	Battery capacity of 3000mAh / 3.7V Voltage
	8+ hours typical operational time
	5 hours recharge time
	Smart Battery System
	Input at 5V DC, 500mA
	Only use the specified Scepter III AC adapter
	Actual time may vary, based on a variety of conditions
System	Windows Mobile 6.1/6.5
	806MHz CPU / 256MB RAM
	5.0MP Camera with AF
	2G Flash storage / MicroSD max up to 8GB
	3.7"VGA LCD with 480 x 640 resolution
	Speaker and Mic
GPS Performance	Professional GPS and GPS antenna
	Support external GPS antenna
	2-5m GPS accuracy*
	TTFF: Cold Start < 50 seconds
	Hot Start < 10 seconds
	NMEA-0183 Protocol output
Communication	Bluetooth v2.0
	WiFi connection
	GSM/GPRS, 850/900/1800/1900MHz
Environment	Temperature: Operation: -20 to +60C° Storage: -30 to +70C°
	Waterproof: IP64
	Drop: 1.2m height on to a concrete floor
Regulatory	• FCC Part 15
	• CE

6. Accessories

CAUTION!

The connection to USB Interfaces has to be limited to USB 2.0 version or higher. The connection to "power use" is prohibited.

Item	Picture	ERP NO.	Name	Description	Quantity
1		018-0011-0006	Li-ion Battery	3.7V /3000 mAh	1
2		081-0000-0005	Strap	Black 180*12mm	1
3		070-0000-0001	Stylus	Black 127mm	1
4		009-0000-0056	USB Cable	USB-MiniUSB L=1500mm	1
5		010-0000-0002	USB Charger	USB Charger No Cable 5V/1A	1
6		079-0011-0006	Getting Started Guide	A5 English 28 pages	1

7. Warranty Terms

The *GIS Scepter III* is guaranteed against defective material and workmanship under normal use and application consistent with this Manual. The equipment is guaranteed for the period indicated, on the warranty card accompanying the product, starting from the date that the product is sold to the original purchaser by *Champion Instruments* Authorized Dealers.

During the warranty period, *Champion Instruments* will, at its discrepancy, repair or replace this product at no additional charge. Repair parts and replacement products will be furnished on an exchange basis and will be either reconditioned or new.

- The limited warranty does not include service to repair damage to the product resulting from an accident, disaster, misuses, abuse or modification of the product.
- Warranty service may be obtained from an authorized *Champion Instruments* warranty service dealer. If this product is delivered by mail, purchaser agrees to insure the product or assume the risk of loss or damage in transit, to prepay shipping charges to the warranty service location, and to use the original shipping container or equivalent.
- A letter should accompany the package furnishing a description of the problem and/ or defect.
- The purchaser's sole remedy shall be replaces as provided above. In no event shall *Champion Instruments* be liable for any damages or any other claim including any claims for lost profits, lost savings, or other incidental or consequential damages arising out of the use of, or inability to use the product.



8. Appendix

Table of Contents:

- i. Product Safety Warnings (Safety and Compliance Information)
 - ii. Pairing Device with Windows 8 PC via. Bluetooth
 - iii. Bluetooth Transfer from Scepter to PC via. Bluetooth
 - iv. How to send files from PC to Scepter via. Bluetooth
-

I. Product Safety Warnings (Safety and Compliance Information)

Use the Scepter III responsibly. Read all instructions and safety informations before use to avoid injury.

Battery safety

Charge battery using only a temperature ranging from 32°F to 104°F (0°C to 40 ° C)

CAUTION!

Danger of explosion if battery is incorrectly replaced.

- Replace only with the same or equivalent type of battery recommended by the manufacturer.
- The maximum operating ambient temperature of the switching power supply declared by the manufacturer is 50 degrees C, 122 degrees F
- Dispose of used batteries according to battery manufacturer's instructions.

Wi-Fi safety

Turn Wi-Fi off in areas where Wi-Fi use is prohibited or when it may cause interference or danger. For example, flying on an airplane.

Care and Maintenance

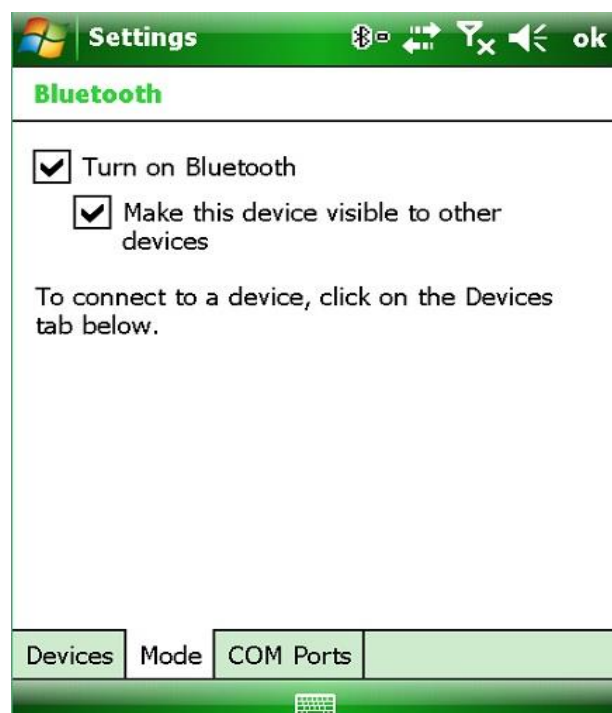
The Scepter III is an electronic product and should be treated with care to reduce the risk of fire, electric shock, or product damage. Do not expose this device to rain, moisture, or any type of liquid that corrodes electronic circuits. If your device gets wet, immediately power off. Allow the device to dry completely before using it again.

II. Pairing device with Windows 8 PC via. Blue-tooth

Step 1:

Before you begin, go into your Scepter III's settings by clicking on the START menu on the top left. Then select SETTINGS. Select the CONNECTIONS tab on the bottom of the SETTINGS menu. Select the BLUETOOTH icon. Then, click on the MODE tab on the bottom. Check BOTH boxes here. This way, our Bluetooth is not only turned on, but visible to other devices that would like to connect. After both boxes are checked, you are ready to connect from your PC. Hit OK at the top right.

Now let's begin the pairing on your PC.



Step 2:

If Bluetooth icon is not visible on bottom right of your home screen, select the SHOW HIDDEN ICONS arrow to reveal the shortcut.



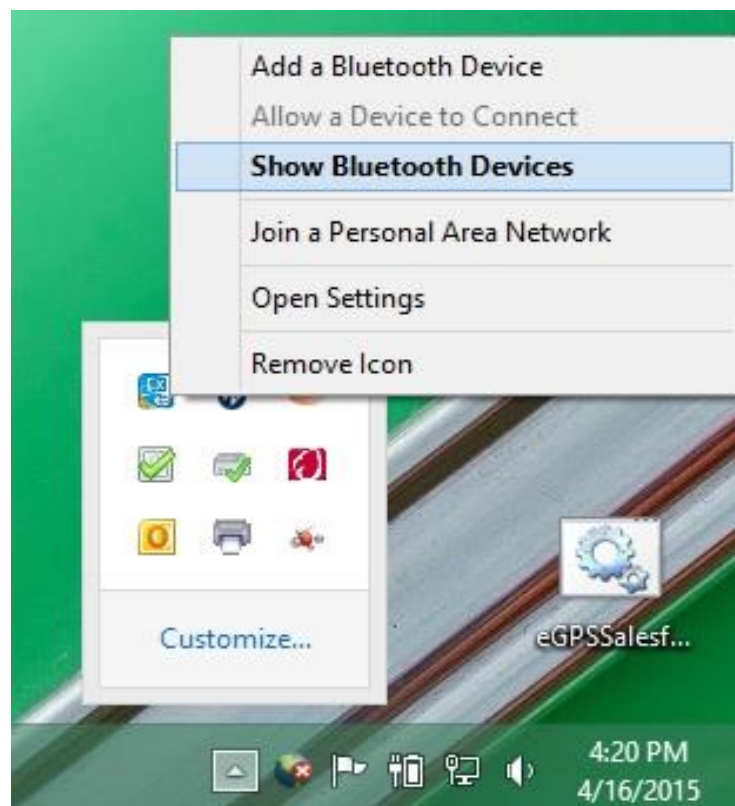
Step 3:

Select Bluetooth Devices to display Properties.



Step 4:

Select "Show Bluetooth Devices"



Manage Bluetooth devices

Bluetooth
On



Your PC is searching for and can be discovered by Bluetooth devices.



iPhone
Paired



GeoHT_Rec
Ready to pair



Unknown
Ready to pair

Step 5:

Manage Bluetooth devices will now popup and you will identify which device is your Data Collector. It appears as GeoHT_Rec, and the note indicates that the unit is ready to pair. Highlight it to select it.

Step 6:

Pair will appear.
Select it.

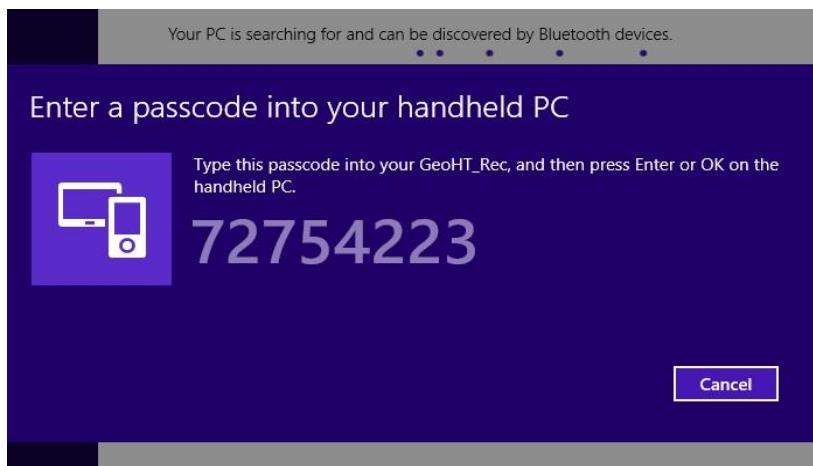


GeoHT_Rec
Ready to pair

Pair

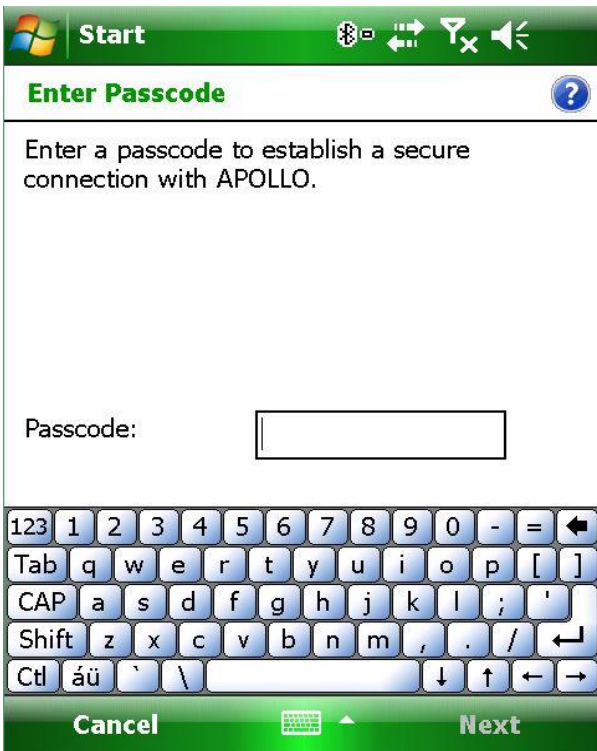
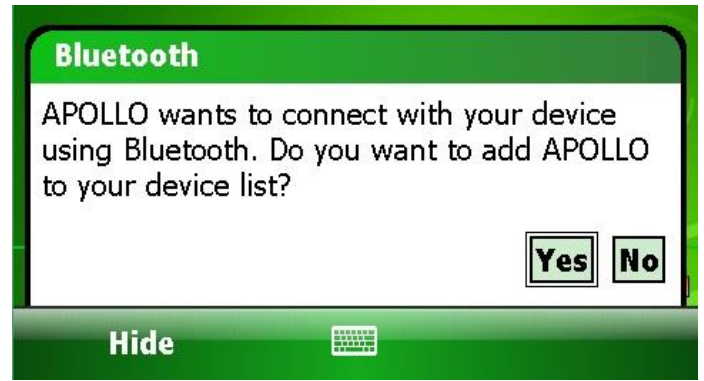
Step 7:

Once Pair is selected, Windows will generate a random passcode (the one shown is just an example, yours will be different) for you to enter onto the Scepter device. If you do not get this entered within a minute or two, Windows will automatically assume the process failed and generate a new passcode to enter.



Step 8:

Your Scepter will alert you that a device wants to connect, and you will have to select YES.
(In this case, the computers name is APOLLO, but the computer name should be displayed as whatever it has been called in its initial setup.)

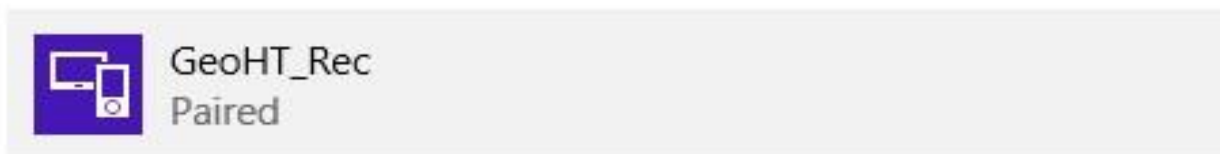


Step 9:

In the box, enter the pass-code that Windows provided you with earlier, and then press NEXT.

Step 10:

Your PC will now indicate that you are PAIRED with your Scepter. Once paired, this connection will be retained. Future connections should be automatic with this service.



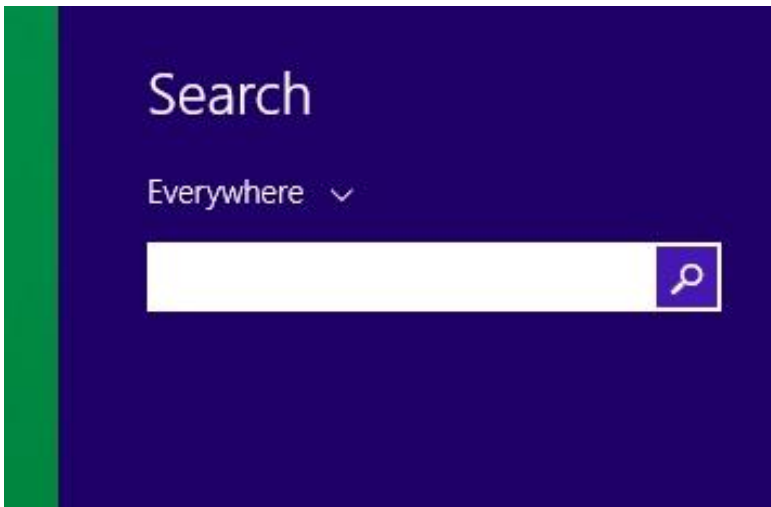
III. Bluetooth Transfer from Scepter to PC via. Bluetooth



GeoHT_Rec
Paired

Step 1:

Before beginning, please see document entitled “Pairing device with Windows 8 PC via Bluetooth” to make sure you have made your Scepter visible, and are connected to your PC. Once connection is successfully established, proceed to step 2.

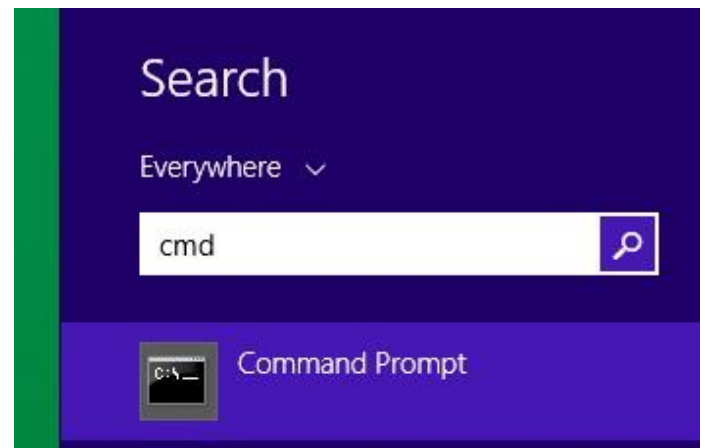


Step 2:

On your Windows 8 PC keyboard, simultaneously hold down the WINDOWS key and press Q to automatically pull up your Search Bar.

Step 3:

Type “cmd” into the Search Bar, and then hit ENTER. This will open your computer’s Command Prompt.



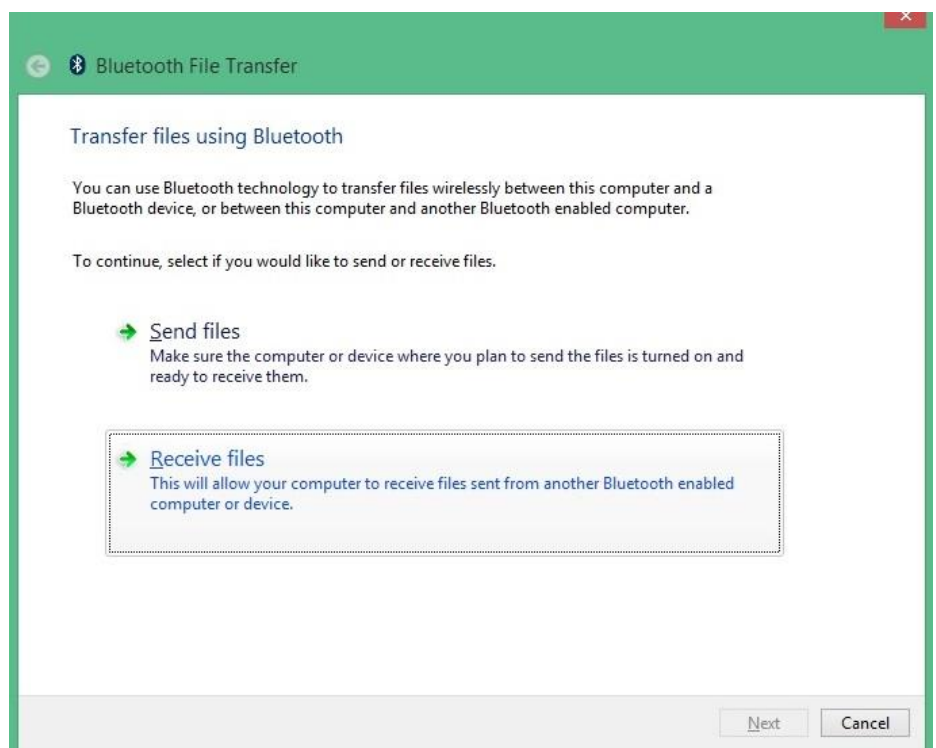


Step 4:

When your Command Prompt opens, type in the command “fsquirt” and then hit ENTER.

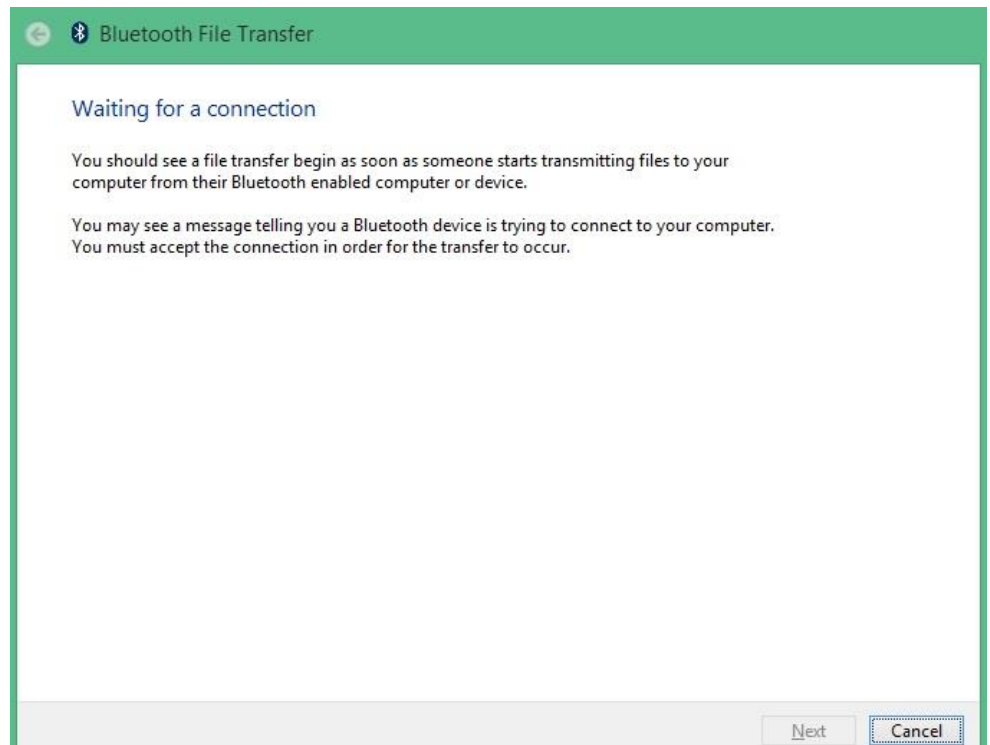
Step 5:

A window will then pop up asking if you’d like to SEND or RECEIVE via Bluetooth Connection. Select RECEIVE.



Step 6:

The window will then tell you that your computer is waiting for a connection. At this point, we will move over to the Scepter to select the file to copy.

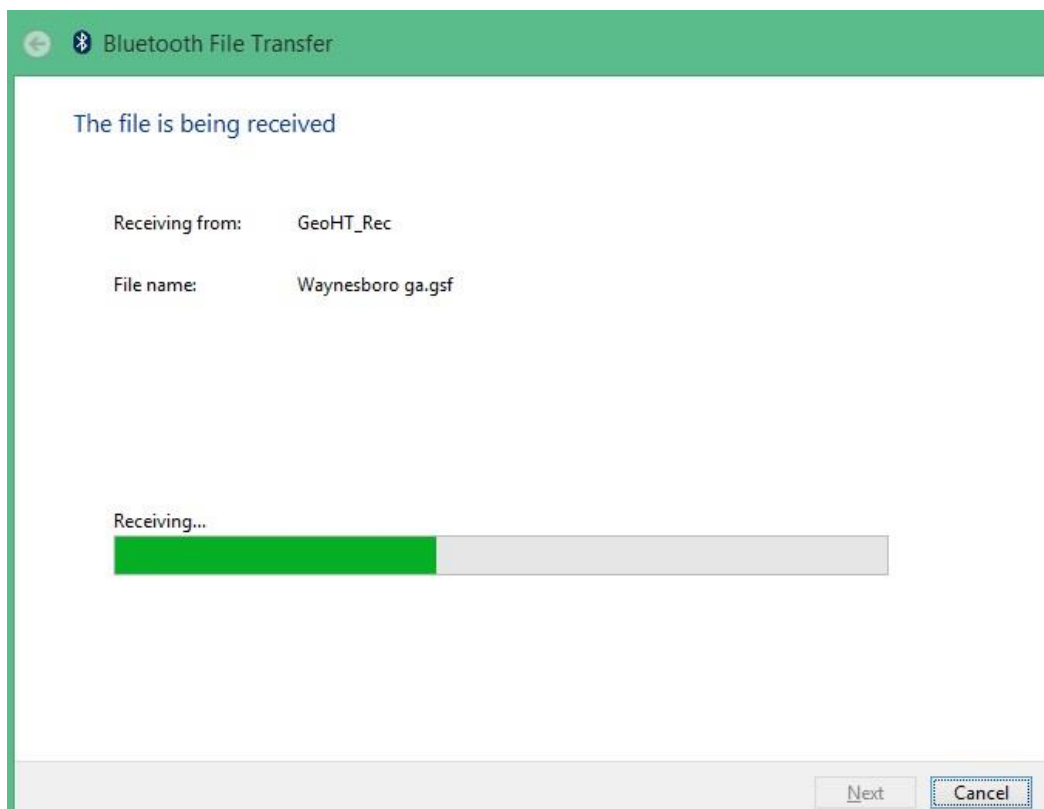


Step 7:

On your Scepter home screen, select the START menu, and choose FILE EXPLORER. Once there, search to the file you are going to send, and hold your stylus on it until the following menu pops up. Select BEAM FILE.

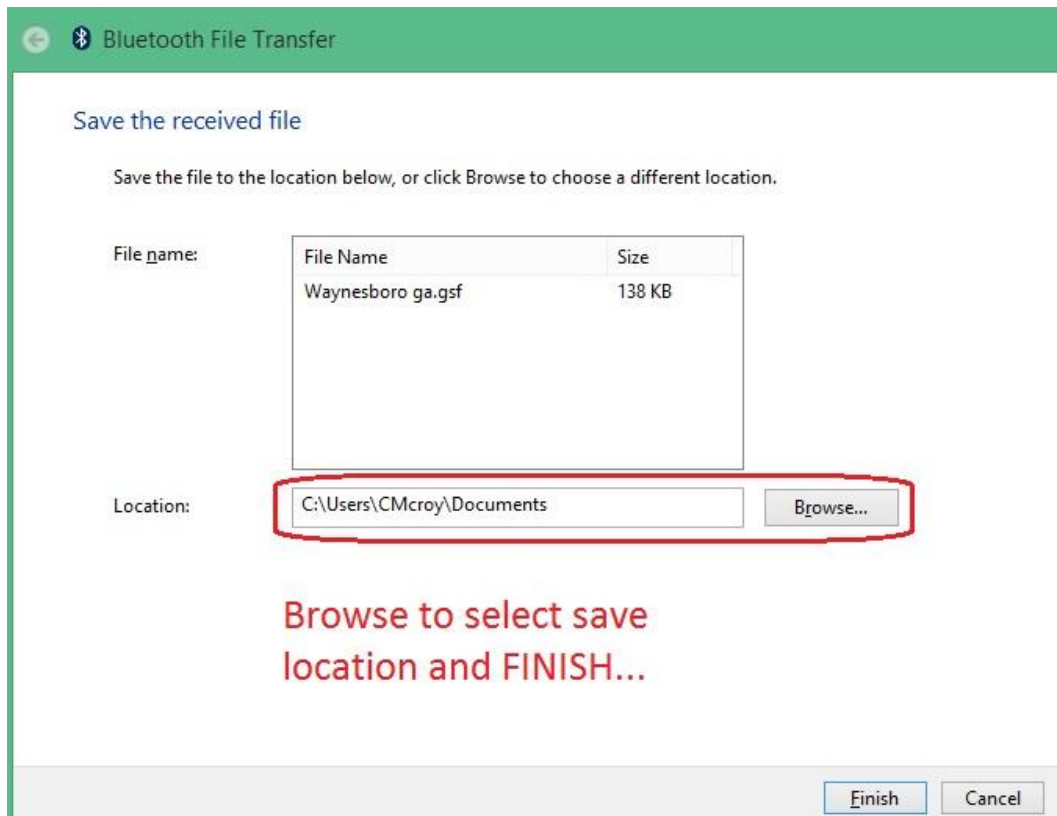
Step 8:

After BEAM FILE is selected, you are prompted to pick which connected Blue-tooth device you would like to copy it to. In this case, the computer in the example is named APOLLO, but your computer will show up as whatever you have named it in your initial Windows 8 setup. Select the corresponding TAP TO SEND.



Step 9:

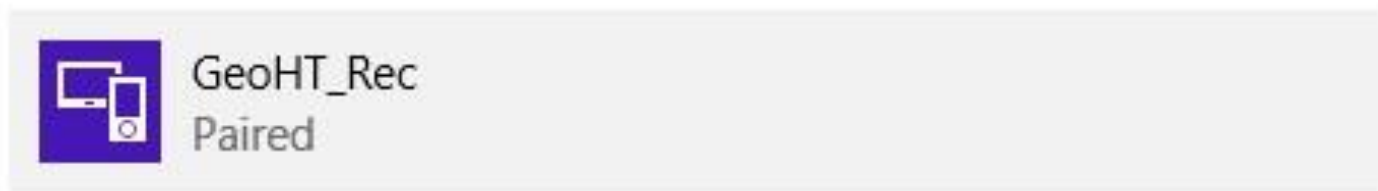
You will then see the file being transferred from the Scepter to your Computer. This file is being copied, not moved. So this file will be on both the computer and the Scepter.



Step 10:

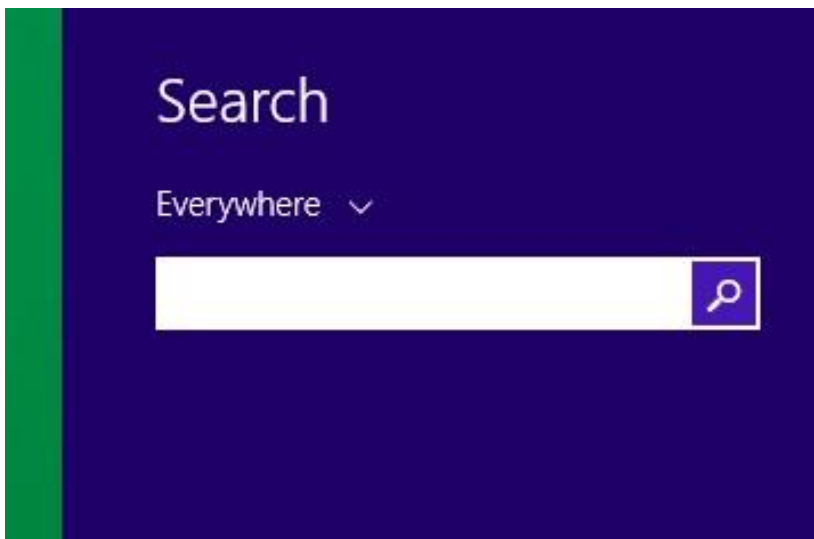
Lastly, you will need to browse to the location on your computer where you would like the copied file to go. After a file path is established, hit FINISH. You have now successfully copied a file from your Scepter to your computer using Bluetooth instead of cabled connection.

IV: How to send files from PC to Scepter via. Bluetooth



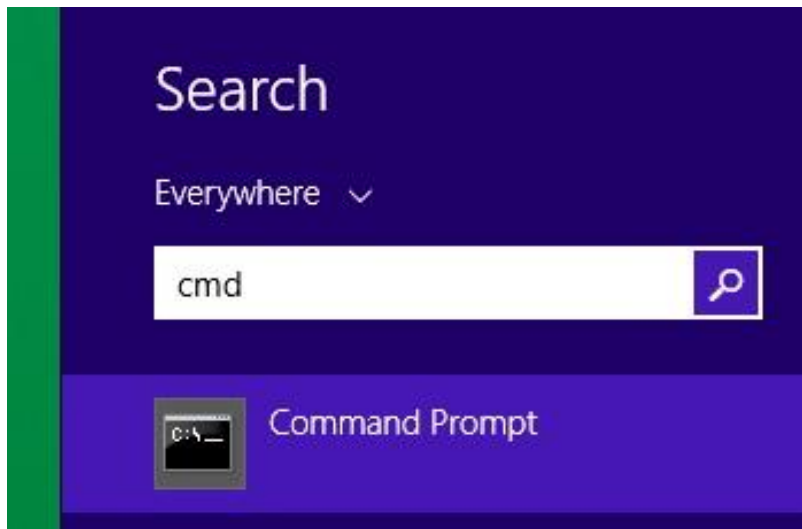
Step 1:

Before beginning, please see document entitled "Pairing device with Windows 8 PC via Bluetooth" to make sure you have made your data collector visible and you are connected to your PC. Once connection is successfully established, proceed to step 2.



Step 2:

On your Windows 8 PC keyboard, simultaneously hold down the WINDOWS and press Q to pull up your Search Bar.



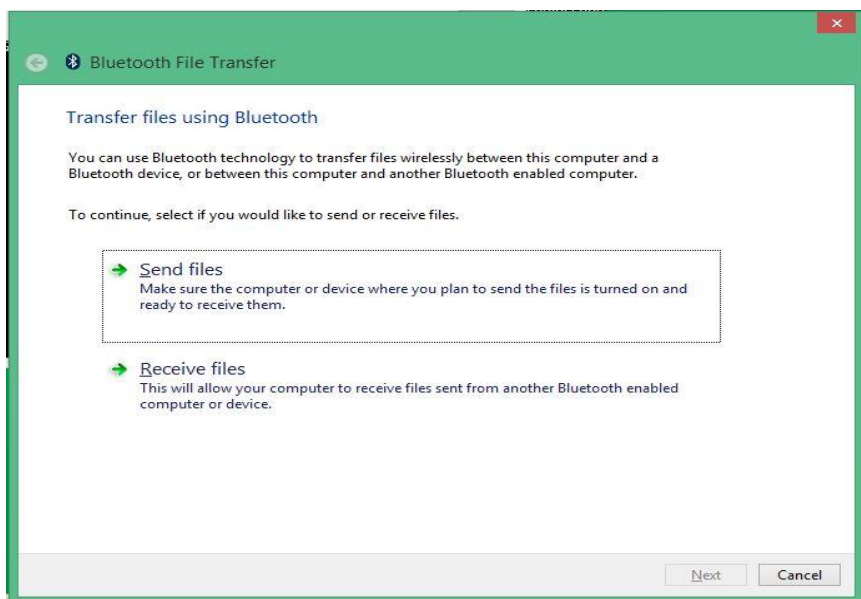
Step 3:

Type "cmd" in the search bar and hit enter, which will open your computer's command prompt.



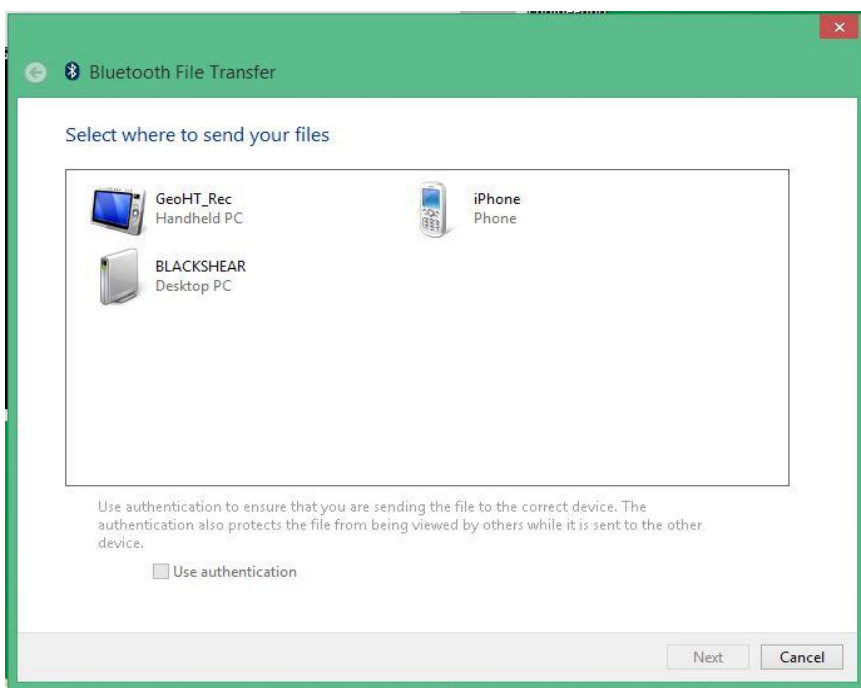
Step 4:

When your command prompt opens, type in "fsquirt" and press enter.



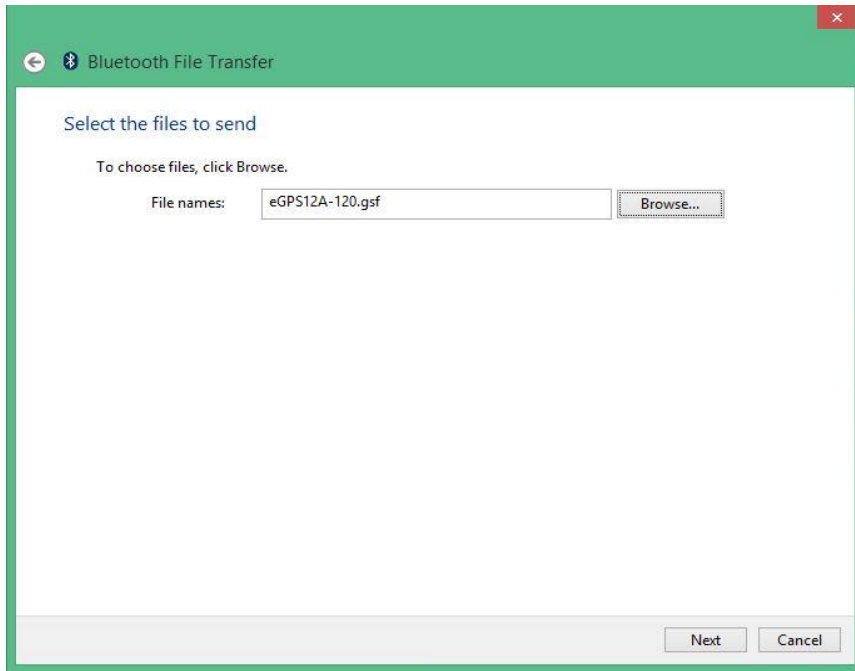
Step 5:

A window will then pop up asking if you'd like to send or receive via bluetooth connection. Select SEND.



Step 6:

You will then be prompted to choose which paired device you would like to send file to. Select the device from the list and hit NEXT.



Step 7:

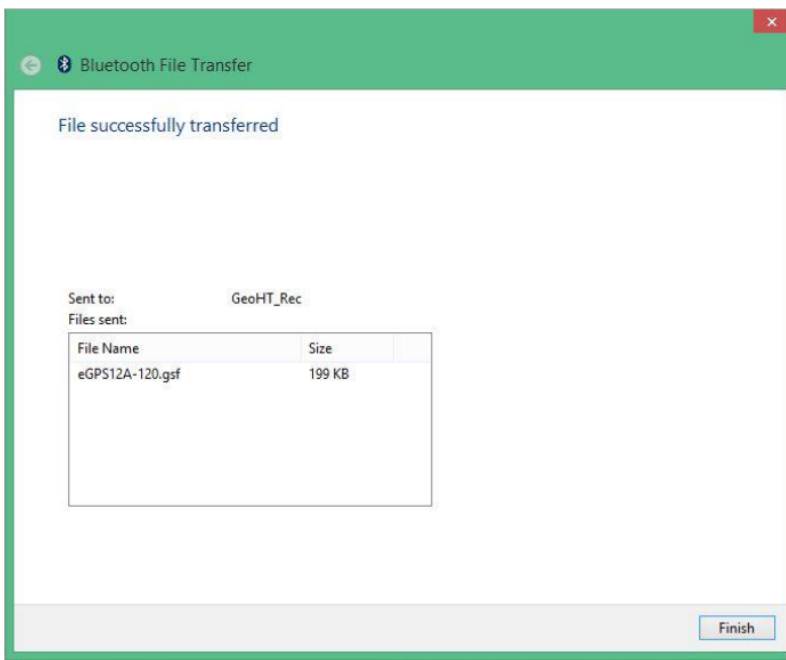
You will then be prompted to browse your computer to find the file you wish to send. Hit Browse, and navigate to where the file is on your PC that you'd like to transfer. Select it and NEXT.



Step 8:

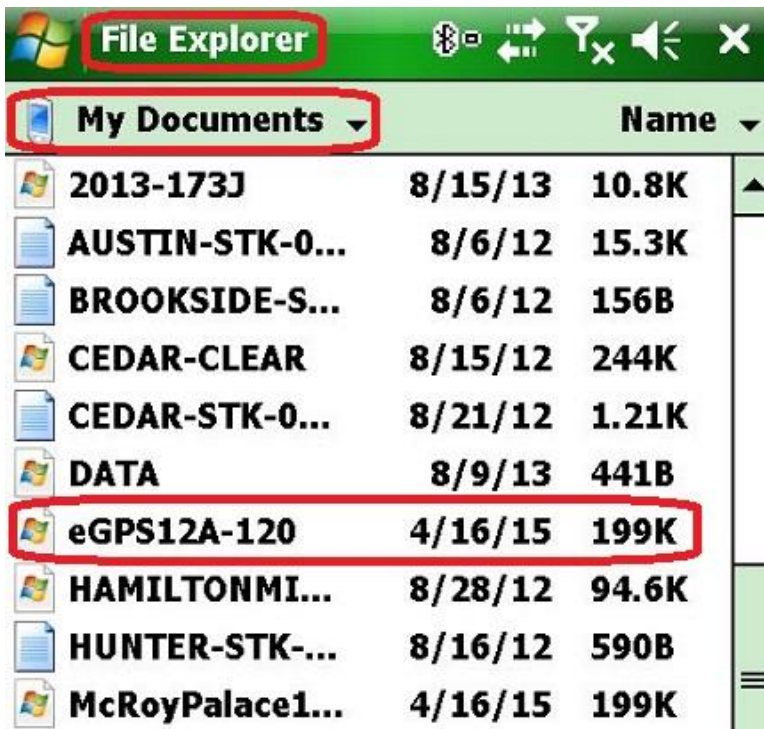
Now you will see the a popup on your Scepter that first tells you that you are Receiving Data, then it will ask you if you want to save to your device. Select YES.





Step 9:

You will see on the computer that the file has been Successfully Transferred. Select FINISH.



Step 10:

NOTE: All files sent to the Scepter will go to My Documents folder by default. To locate them, simply go to the START menu on your Scepter, select FILE EXPLORER, select MY DOCUMENTS, and scroll down until you see it.

To move to another location, hold your stylus on the file until a menu pops up, and select COPY.

Then navigate to the desired location, select MENU at the bottom, select EDIT, then PASTE.

You will then see your file in the new location.

You can then delete from its original location in MY DOCUMENTS by returning to that folder, holding your stylus on the file, and selecting DELETE.

Should you need additional assistance, please contact your local distributor. Champion Instruments at **678-386-2208**, or visit the Champion Instruments website at

<http://www.championinstruments.com>



Notes: